

cubicle & washroom

2010
collection
2011

*Polyrey HPL
Polyrey Compact
Panoprey MFC*



Sanitized® 
ANTIBACTERIAL COMPACT

Please refer to Availability table

colour selector

cubicle & washroom

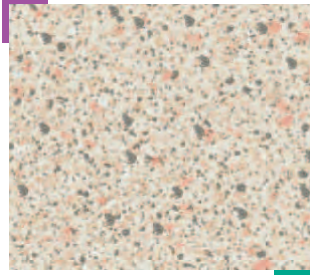
All decors are available in HPL

Decors available in Panoprey

Decors available in Compact



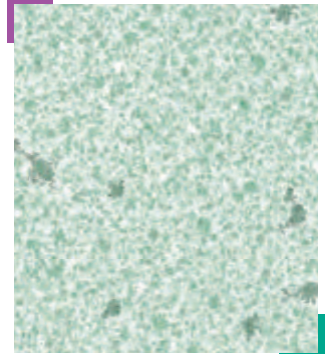
M 001
Maryland Clair
HPL SURF
Compact FA
Panoprey FA



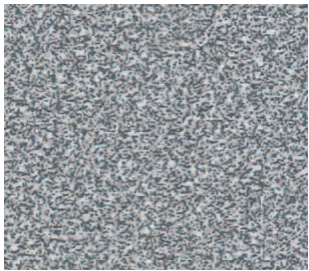
C 030
Cosmic Beige
HPL SURF
Compact FA
Panoprey FA



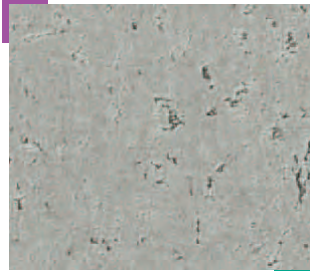
C 032
Cosmic Rose
HPL SURF
Compact FA
Panoprey FA



C 031
Cosmic Vert
HPL SURF
Compact FA
Panoprey FA



M 002
Maryland Moyen
HPL SURF



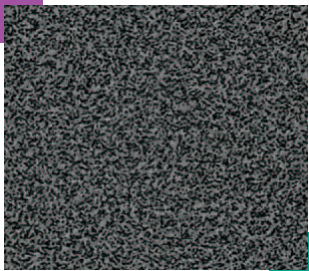
B 057
Béton Naturel
HPL FA
Compact FA
Panoprey FA



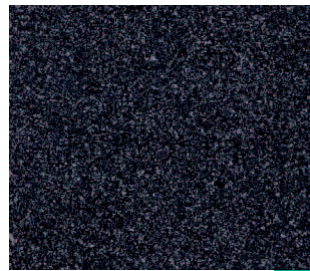
M 077
Myriade Jaune
HPL SURF
Compact FA
Panoprey FA



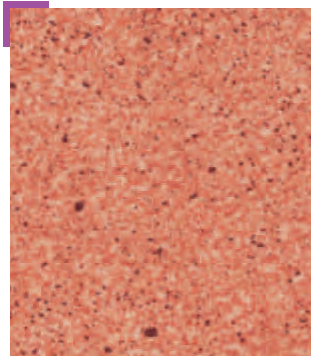
M 079
Myriade Vert
HPL SURF
Compact FA
Panoprey FA



M 003
Maryland Foncé
HPL SURF
Compact FA
Panoprey FA



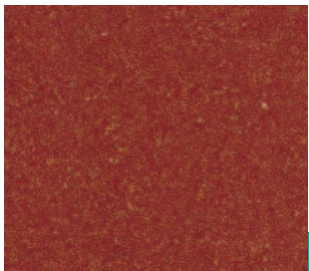
V 032
Vega Noir
HPL FA
Compact FA



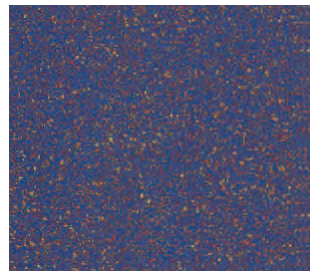
N 049
Nova Argile
HPL SURF
Compact FA
Panoprey FA



N 028
Nova Mousse
HPL SURF
Compact FA
Panoprey FA



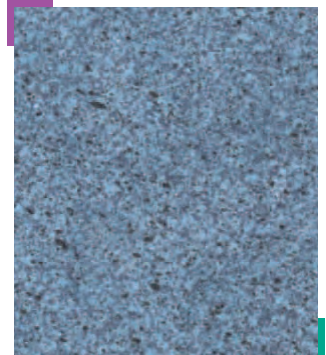
V 052
Volans Rouge
HPL FA
Compact FA



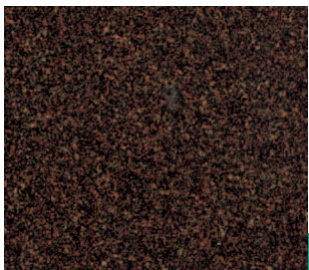
V 050
Volans Bleu
HPL FA
Compact FA



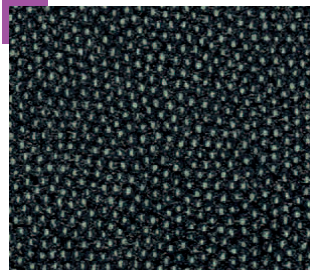
N 022
Nova Lilas
HPL SURF
Compact FA
Panoprey FA



N 023
Nova Saphir
HPL SURF
Compact FA
Panoprey FA



V 051
Volans Noir
HPL FA
Compact FA



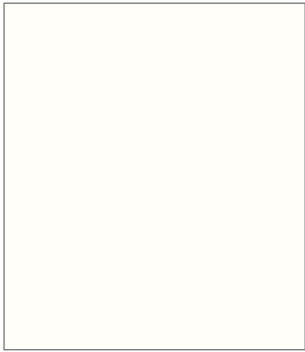
C 011
Caviar
HPL SURF
Compact FA
Panoprey FA

colour selector

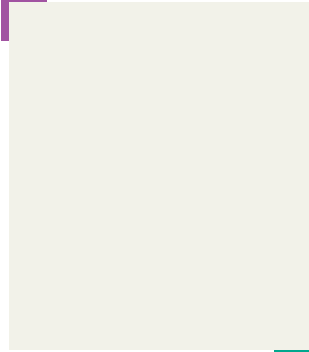
All decors are available in HPL

Decors available in Panoprey

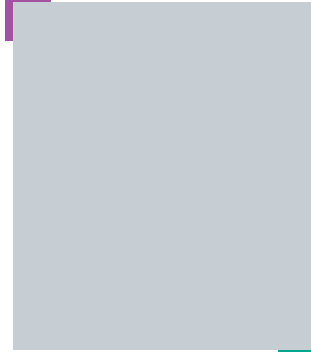
Decors available in Compact



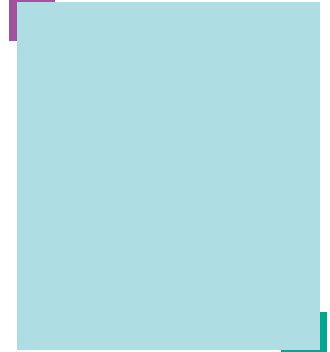
B 070 HPL FA
Blanc Mégève



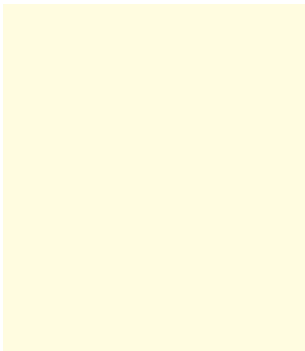
B 015 HPL FA
Blanc Menuires
Compact FA
Panoprey FA



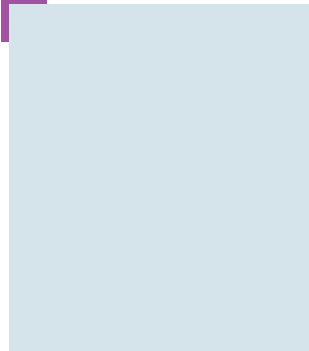
G 029 HPL FA
Gris Tourterelle
Compact FA
Panoprey FA



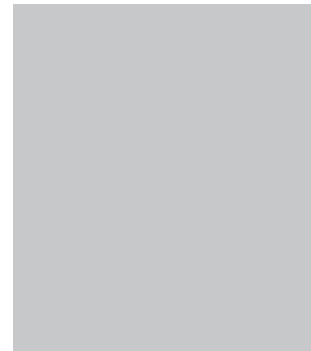
V 011 HPL FA
Vert d'Eau
Compact FA
Panoprey FA



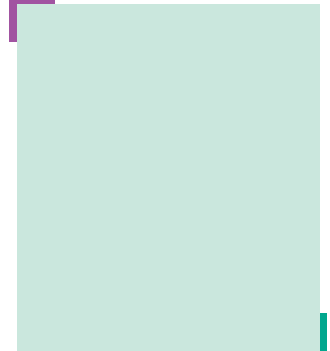
B 012 HPL FA
Blanc Antique



F 008 HPL FA
Fumée
Compact FA
Panoprey FA



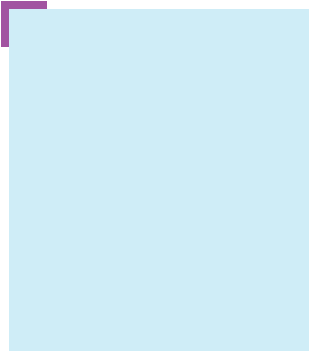
G 044 HPL FA
Gris Dauphin



A 014 HPL FA
Aigue-Marine
Compact FA
Panoprey FA



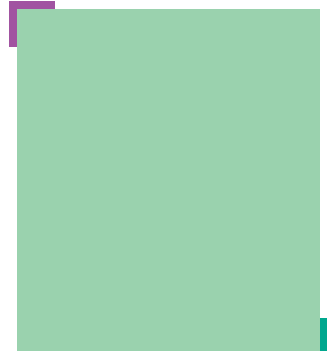
C 017 HPL FA
Coquille d'Œuf
Compact FA
Panoprey FA



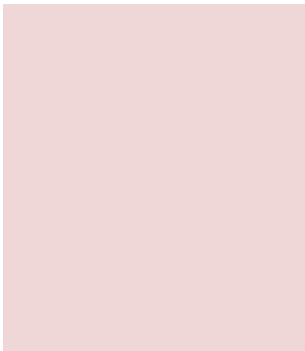
Y 023 HPL FA
Heather Blue
Compact FA
Panoprey FA



G 003 HPL FA
Gris Perle
Compact FA
Panoprey FA



A 036 HPL FA
Amandine
Compact FA
Panoprey FA



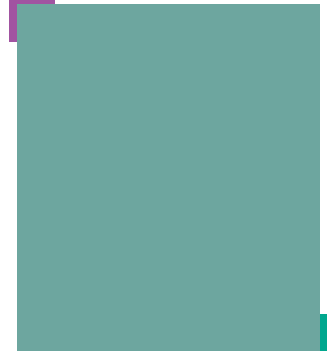
P 053 HPL FA
Pétale de Rose



R 021 HPL FA
Rose Tendre



C 018 HPL FA
Chardon
Compact FA

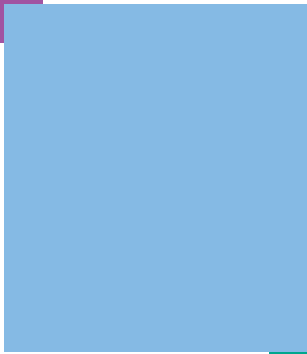


M 047 HPL FA
Mousse
Compact FA
Panoprey FA

All decors are available in HPL

Decors available in Panoprey

Decors available in Compact



B 048
Bleu Oslo
HPL FA
Compact FA
Panoprey FA



J 018
Jaune Gouache
HPL FA



E 028
Erable Nordique
HPL FA
Compact FA



N 027
Noyer Vénitien
HPL FA
Compact FA



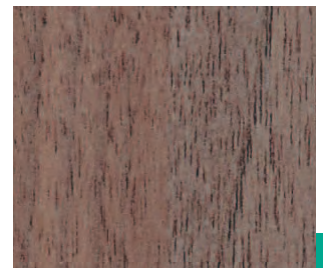
B 001
Bleu Flash
HPL FA
Compact FA
Panoprey FA



G 031
Genêt
HPL FA
Compact FA
Panoprey FA



P 067
Poirier Naturel
HPL FA



N 026
Noyer Ombré
HPL FA
Compact FA



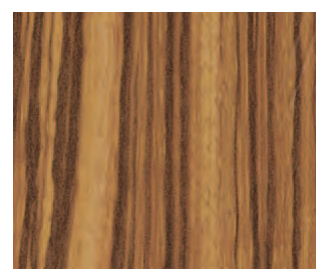
B 086
Bleu Caraïbes
HPL FA
Compact FA
Panoprey FA



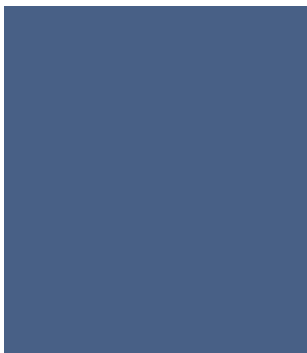
V 014
Vinyle
HPL FA
Panoprey FA



H 025
Pommier de Honfleur
HPL FA
Compact FA



Z 009
Zebrano Ambré
HPL FA



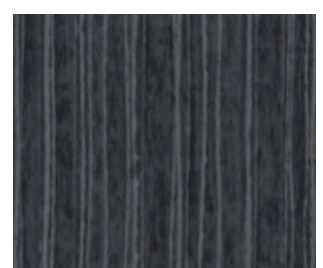
S 018
Schiste
HPL FA
Compact FA



C 062
Capucine
HPL FA
Compact FA
Panoprey FA



A 057
Aulne Naturel
HPL FA
Compact FA



B 101
Banian Noirci
HPL FA



R 036
Rouge Cerise
HPL FA
Compact FA

samples
express
information

Tel: +44 (0) 1923 202700
Fax: +44 (0) 1923 202729
E-mail: polyrey.uk@polyrey.com
Internet: www.polyrey.com

Due to the nature of printed colour reproduction we would recommend viewing actual samples prior to colour selection.

cubicle & washroom collection

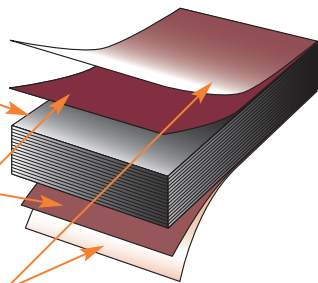
Polyrey High Pressure Laminate, Polyrey Compact Solid Grade Laminate and Panoprey Melamine Faced Chipboard – A complete product offer to meet the requirements of most applications within a cubicle and washroom environment (cubicles, partitions, lockers).

Compact Solid Grade Laminate

Black core composed of kraft papers impregnated with phenolic resin.

Decorative paper impregnated with melamine resin.

Protective surface impregnated with melamine resin (overlay) for printed decors.



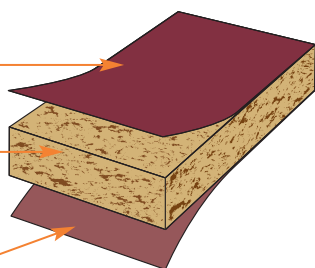
- Exceptional resistance to water and impact.
- The ideal product for demanding, high traffic environments such as swimming pools, changing rooms and shower areas.
- Meets the highest hygiene and sterility requirements due to its non-porous edges and inert surface. Allows for easy cleaning and maintenance.

Panoprey MFC Melamine Faced Chipboard

Decorative paper impregnated with melamine resin.

Chipboard core.

Decorative paper impregnated with melamine resin.



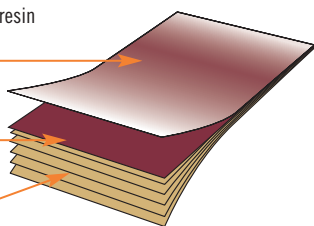
- Chipboard with 2 melamine faces offering high resistance to humidity.
- Moisture resistant grade offering a higher resistance to humidity
- Cost-effective solution for all non-wet area applications.
- All decors available in HPL for vanity units.

Polyrey HPL High Pressure Laminate

Protective surface impregnated with melamine resin (overlay) for printed decors.

Decorative paper, printed or deep dyed plain colour, impregnated with melamine resin.

Layers of kraft paper impregnated with phenolic resin.



- High impact and scratch resistance.
- 4+ metre sheets for cubicle partitions up to 1660mm deep (Disability Discrimination Act 2004).
- 3660 x 1510mm sheets available for standard size 1800 x 1500mm partitions.

Find out more




For more information, please ask for the following brochures:

- Lockers and Vanity Units range (10mm postforming grade Compact).
- Compact fabrication guidelines.
- 2007-2012 collection.
- The guide (decor availability and technical information).



Tel: +44(0) 1923 202700
Fax: +44(0) 1923 202729
Email: polyrey.uk@polyrey.com
Internet: www.polyrey.com


Product offer

| | | | | Essential products | | | | | | |
|---------------|---------------------|------------------|-----------------------|--------------------|---|-------------|-------------|--|-------------|--|
| | | | | Product |  Postforming grade HPL | | |  Solid grade laminate | |  Melamine faced chipboard |
| plain colours | | | | Brand | POLYREY HPL | | | COMPACT | | PANOPREY |
| | | | | Size mm | 4120 x 1510 | 4320 x 1660 | 3660 x 1510 | 2600 x 2050 | 3660 x 1510 | 2800 x 2070 |
| | | | | Thickness mm | 0.8 | 0.8 | 0.8 | 12.5 | 12.5 | 19 |
| Code | Name | Nearest NCS ref. | Nearest BS ref.* | Luminescence | Finish | | | Finish | | Finish |
| A 014 | Aigue-Marine | S 1010-G | 14C31 (L) | 0.68 | — | FA | FA | FA | FA | FA |
| A 036 | Amandine | S1030-G10Y | 14C33 (L) / 14D41 (D) | 0.58 | — | FA | FA | FA | FA | FA |
| B 001 | Bleu Flash | S 2065-R90B | 20E53 (G) | 0.15 | — | FA | FA | FA | FA | FA |
| B 012 | Blanc Antique | S 0603-G80Y | 10B15 (D) | 0.85 | — | FA | FA | — | — | — |
| B 015 | Blanc Menuires | S 0502-G50Y | 00E55 (G) | 0.87 | — | FA | FA | FA | FA | FA |
| B 048 | Bleu Oslo | S 1030-R80B | 20D41 (D) | 0.52 | — | FA | FA | FA | FA | FA |
| B 070 | Blanc Mégève | S 0500-N | 10A01 (G) | 0.83 | — | FA | FA | — | — | — |
| B 086 | Bleu Caraïbes | S 4050-R80B | — | 0.10 | — | FA | FA | FA | FA | FA |
| C 017 | Coquille d'Oeuf | S 0907-Y30R | 08C31 (G) | 0.68 | — | FA | FA | FA | FA | FA |
| C 018 | Chardon | S 4030-R90B | 20C37 | 0.19 | — | FA | FA | FA | FA | — |
| C 062 | Capucine | S 1080-Y90R | 04E53 (G) | 0.19 | — | FA | FA | FA | FA | FA |
| F 008 | Fumée | S 1010-R80B | 22C31 (L) | 0.68 | — | FA | FA | FA | FA | FA |
| G 003 | Gris Perle | S 3005-R80B | 18B19 (L) | 0.41 | — | FA | FA | FA | FA | FA |
| G 029 | Gris Tourterelle | S 1502-B | 22B17 (D) | 0.53 | — | FA | FA | FA | FA | FA |
| G 031 | Genêt | S 0560-Y20R | — | 0.58 | — | FA | FA | FA | FA | FA |
| G 044 | Gris Dauphin | S 2000-N | 02A03 (L) | 0.55 | — | FA | FA | — | — | — |
| J 018 | Jaune Gouache | S 1050-Y10R | — | 0.64 | — | FA | FA | — | — | — |
| M 047 | Mousse | S 3020-B70G | 16C35 (L) | 0.34 | — | FA | FA | FA | FA | FA |
| P 053 | Pétale de Rose | S 0907- R10B | 04B15 (G) | 0.75 | — | FA | FA | — | — | — |
| R 021 | Rose Tendre | S 1515-R40B | 24C33 (L) | 0.58 | — | FA | FA | — | — | — |
| R 036 | Rouge Cerise | S 2570-Y90R | 04E56 (L) | 0.13 | — | FA | FA | FA | FA | — |
| S 018 | Schiste | S 430-R80B | 20C37 (L) | 0.11 | — | FA | FA | FA | FA | — |
| V 011 | Vert d'Eau | S 0520-B30G | 16C33 (D) | 0.66 | — | FA | FA | FA | FA | FA |
| V 014 | Vinyle | S 1060-Y50R | 06E51 (D) | 0.37 | — | FA | FA | — | — | FA |
| Y 023 | Heather Blue | S 0510-B | — | 0.77 | — | FA | FA | FA | FA | FA |
| woodgrains | | | | | | | | | | |
| A 057 | Aulne Naturel | | | 0.43 | — | FA | — | — | FA | — |
| B 101 | Baniam Noirci | | | 0.10 | — | FA | — | — | — | — |
| E 028 | Erable Nordique | | | 0.51 | — | FA | — | — | FA | — |
| H 025 | Pommier de Honfleur | | | 0.46 | — | FA | — | — | FA | — |
| N 026 | Noyer Ombré | | | 0.17 | — | FA | — | — | FA | — |
| N 027 | Noyer Vénitien | | | 0.30 | — | FA | — | — | FA | — |
| P 067 | Poirier Naturel | | | 0.35 | — | FA | — | — | — | — |
| Z 009 | Zebrano Ambré | | | 0.15 | — | FA | — | — | — | — |
| patterns | | | | | | | | | | |
| B 057 | Béton Naturel | | | 0.48 | — | FA | — | FA | FA | FA |
| C 011 | Caviar | | | 0.10 | SURF | — | — | FA | FA | FA |
| C 030 | Cosmic Beige | | | 0.57 | SURF | — | — | FA | FA | FA |
| C 031 | Cosmic Vert | | | 0.59 | SURF | — | — | FA | FA | FA |
| C 032 | Cosmic Rose | | | 0.57 | SURF | — | — | FA | FA | FA |
| M 001 | Maryland Clair | | | 0.55 | SURF | — | — | FA | FA | FA |
| M 002 | Maryland Moyen | | | 0.27 | SURF | — | — | — | — | — |
| M 003 | Maryland Foncé | | | 0.13 | SURF | — | — | — | FA | FA |
| M 077 | Myriade Jaune | | | 0.58 | SURF | — | — | FA | FA | FA |
| M 079 | Myriade Vert | | | 0.28 | SURF | — | — | FA | FA | FA |
| N 022 | Nova Lilas | | | 0.54 | SURF | — | — | FA | FA | FA |
| N 023 | Nova Saphir | | | 0.23 | SURF | — | — | FA | FA | FA |
| N 028 | Nova Mousse | | | 0.33 | SURF | — | — | FA | FA | FA |
| N 049 | Nova Argile | | | 0.31 | SURF | — | — | FA | FA | FA |
| V 032 | Vega Noir | | | 0.11 | — | FA | — | — | FA | — |
| V 050 | Volans Bleu | | | 0.11 | — | FA | — | — | FA | — |
| V 051 | Volans Noir | | | 0.11 | — | FA | — | — | FA | — |
| V 052 | Volans Rouge | | | 0.14 | — | FA | — | — | FA | — |

* Colour match to Polyrey decor: G = Good, L = Lighter, D = Darker.

Get more from Polyrey

- Compact size 2600 x 2050mm is  as standard.

For more information about  please contact your cubicle manufacturer or the Polyrey Express Sample Line.

- All products are available in other sheet sizes and thicknesses.
- All decors featured are available ex-stock from our nationwide network of distributors.

**samples
express
information**

Tel: +44 (0) 1923 202700
Fax: +44 (0) 1923 202729
E-mail: polyrey.uk@polyrey.com
Internet: www.polyrey.com

polyrey
A WILSONART COMPANY

Langley Place · 99 Langley Road
WATFORD WD17 4AU · UK